

# PE → PUMP ENGINEERING



**Pumps for every liquids handling application**

Pump Engineering manufactures and markets one of the widest ranges of pumps in the UK for just about every liquids handling application.

Whatever industry sector you are involved in; Industrial & Chemical, Pharmaceutical & Cosmetics, Food & Drink or Water & Waste... we can probably supply a pump to suit your requirements.

It's our fast and professional response to all enquiries and our ability to select the correct pump, even when handling difficult and aggressive liquids, that really sets us apart from other pump suppliers.

Our quality of service combined with competitive prices, quick and reliable deliveries, efficient after-sales and technical expertise is the foundation of our reputation.

To help you identify the pump best suited to your industry or application we have colour coded four key industry sectors along with basic technical information. Of course in many cases our pumps can be used across more than one industry for different applications.

This brochure contains basic technical information, for more comprehensive details on our product range, please contact our sales office:

Tel: 01903 730900

e-mail: [sales@pumpeng.co.uk](mailto:sales@pumpeng.co.uk)

[www.pumpeng.co.uk](http://www.pumpeng.co.uk)

### Industrial & Chemical



### Pharmaceutical & Cosmetics



### Food & Drink



### Water & Waste



## Flux Drum / Barrel Emptying – Low Viscosity



- Air or electrically operated
- Robust reliable design for high speed transfer
- Over 100 models to meet every requirement
- Materials to suit wide range of liquids

### Typical Applications

- Handling acids, solvents, alkalis, oils and plating solutions
- Hazardous liquids in ATEX areas such as acetone or alcohol, deionised water and essential oils
- Pumping flavourings, food processing oils, CIP chemicals

## Flux Drum / Barrel Emptying – High Viscosity

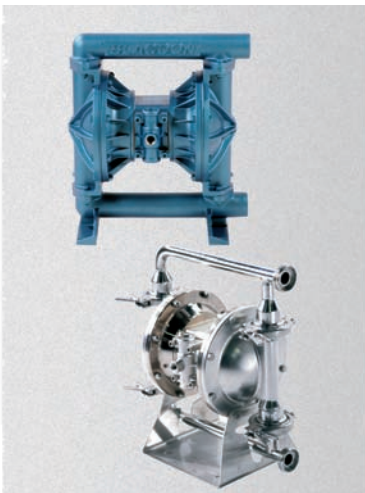


- Simple to operate, clean and maintain
- Lightweight versions for ease of handling
- Robust design, with powerful and reliable performance

### Typical Applications

- Transferring adhesives, resins, paints and polymers
- Pumping syrups, creams and suspensions
- Transferring liquid sugar, fruit concentrates and yeast extracts

## Blagdon Double Diaphragm Pumps



- Simple versatile design for a wide range of applications
- Extensive range of metal and plastic pumps including hygienic (EHEDG) pumps
- Flow rates from 2 lit/min up to 45m<sup>3</sup>/hr
- High pressure options available

### Typical Applications

- Pumping inks, dyes, solvents, acids, alkalis and plating solutions
- Pumping liquids, creams, solvents, shampoos and scrubs
- Transferring batter, sauces, soft drinks and syrups
- Handling effluents, waste oils and slurries

 **Industrial & Chemical**

 **Pharmaceutical & Cosmetics**

 **Food & Drink**

 **Water & Waste**

## CSF - Piston



- Air-operated, double acting pumps
- Latch valve arrangement on the air motor prevents stalling
- Quick-strip versions available for food and pharmaceutical applications
- Models capable of flows up to 100 lit /min and pressures up to 150 bar

### Typical Applications

- Adhesives, resins, paints and oils
- Creams, pastes and gels
- Transferring tomato puree, creams, cakes mixes, sauces and syrups



## CSF – Twin Post System



- Minimises product loss on high viscosity products
- Can use most pumps from the CSF piston range.
- Pneumatic arrangement eases manual handling
- Manufactured to suit your application

### Typical Applications

- Pumping mascara, petroleum jelly and other non-flowing or highly viscous products
- Transferring mashed potato, peanut butter or yeast extracts



## Steam Water Mixer



- A safe, reliable, energy-saving source of hot water
- Steam valve shuts off if water supply fails
- Provides a water temp up to 95°C and volumes up to 10,000 lit/hr
- Simple to install using existing steam and cold water supplies

### Typical Applications

- Washing down vessels in inks, coatings and glue production
- Ideal for washing down process areas, machinery and storage vessels
- Cleaning food process, storage and mixing vessels



## CSF CS/AS – Centrifugal Pumps



- High efficiency, low NPSH hygienic centrifugal pumps available to EHEDG and 3A standards
- Clean-in-place, simple to maintain back pull-out design
- Single, multistage and self-priming designs with flow rates from 1-570 m<sup>3</sup>/hr at heads up to 150m
- Open impeller design can handle liquids with particles or small solids and high temperature liquids with a tendency to crystallise
- Full range of ATEX versions available

### Typical Applications

- CIP feed and scavenge duties
- Transfer in dairy, food, pharmaceutical, soft drinks and brewing industries

## CSF Progressive-cavity Pumps

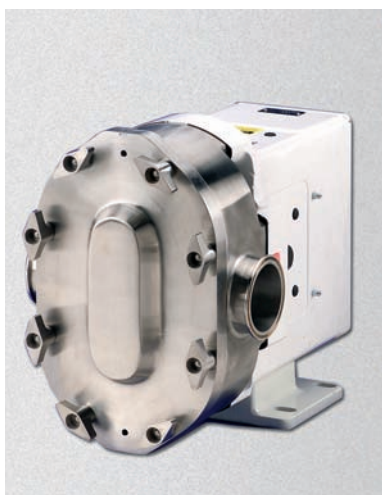


- Hygienic and industrial stainless steel and cast iron pumps
- Self-priming, reversible, positive-displacement pumps for high viscosity and non-flowing products
- Quick-strip, high swept volume, modular design for easy cleaning
- Hopper with pre-feeding screw and vane crushers for high solids applications

### Typical Applications

- Transferring resins, glues, paints and inks in chemicals and printing industries
- Pumping creams, pastes and soaps
- Transferring jams, pastes, creams and other highly viscous media in food and beverage industries
- Handling sludges, sewage and effluents in water treatment plants

## Wright - Rotary Bi-wing Pump



- Hygienic stainless steel pumps for high viscosity or shear-sensitive products and especially effective on high solids content products
- Higher volumetric efficiency than conventional rotary lobe pumps
- Parts interchangeable with Waukesha® Universal series pumps
- Capacities from 20 litres/hr to 102 m<sup>3</sup>/hr at up to 34 bar

### Typical Applications

- Transferring paints, inks, resins and polymers in general industry
- Pumping creams, lotions, pastes and gels in cosmetics and pharmaceutical industries
- Ideal for transferring dairy products, sugar/glucose solutions, ready meal fillings, sausage meat and mashed potato

 **Industrial & Chemical**

 **Pharmaceutical & Cosmetics**

 **Food & Drink**

 **Water & Waste**

## Alpha - Centrifugal Pumps



- Robust, cast iron centrifugal pumps
- End suction, self-priming and multi-stage
- Flow rates up to 360m<sup>3</sup>/hr at heads up to 200m
- Standard IEC motors
- Stainless steel versions available

### Typical Applications

- Diesel transfer, seawater, spray booth water curtains
- Irrigation, construction and waste water



## Lowara - Centrifugal Pumps



- Robust and reliable pumps in either cast iron or stainless steel
- End-suction, in-line and vertical multi-stage pumps
- Submersible, immersible and borehole models
- Packaged booster sets

### Typical Applications

- Boiler feed, pressure boosting, chillers, injection-moulding and HVAC
- Site services and hot water sets
- Waste water, sewage, washdown and irrigation



## 3M - Mag-Drive Pumps



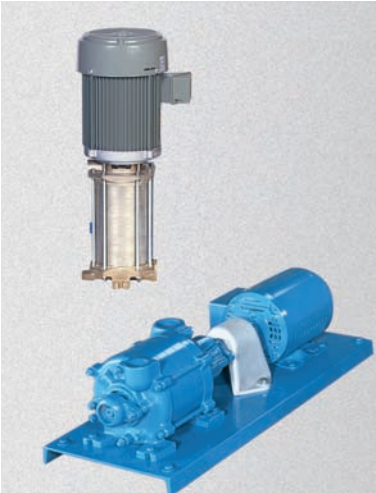
- Magnetic drive centrifugal, regenerative turbine and vane pumps
- API versions available
- Flow rates from 0.5-1000 m<sup>3</sup>/hr at heads up to 1300 metres at temperatures from 150 °C to +450 °C
- Available in stainless steel, Hastelloy C, Incoloy, Titanium, PP and PVDF

### Typical Applications

- Acids, alkalis, hydrocarbons, heat transfer oils, liquid gases, toxic and explosive chemicals
- Low viscosity surfactants, acids and CIP chemicals
- CIP chemicals - sodium hydroxide, nitric acid and hydrogen peroxide
- Water treatment chemicals



## MTH Pumps



- Regenerative turbine, magnetic drive and canned rotor pumps
- Ideal for low flow high pressure applications
- Very low NPSH for high temperature or low vapour pressure
- Handles liquids with entrained air.

### Typical Applications

- Boiler feed, condensate return, high pressure cooling, refrigeration, petrochem
- CIP chemical feed, seal flushing, DAF filtration systems

## ASV - Centrifugal Pumps



- Din standard sealed and magnetic drive horizontal and vertical centrifugal pumps
- Flow rates up to 500 m<sup>3</sup>/hr, heads up to 100 metres
- Available in PE, PP, PVDF and UHMW-PE
- Self-priming eccentric rotor pumps for low flow rates

### Typical Applications

- Corrosive and aggressive process liquids, ultra pure water, plating industry
- Water treatment chemicals, industrial effluent

## GVR - Gear Pumps



- Robust, competitively priced self-priming external gear pumps
- Standard pumps suitable for handling liquids up to 140 °C and pressures up to 10 bar
- Close coupled pumps available for flow rates up to 60 lit/min standard foot mounted models capable of flow rates up to 600 lit/min
- Available in cast iron, AISI 316 stainless steel and bronze

### Typical Applications

- Lubricating, hydraulic and transformer oils, fuel transfer machine tools

 Industrial & Chemical

 Pharmaceutical & Cosmetics

 Food & Drink

 Water & Waste

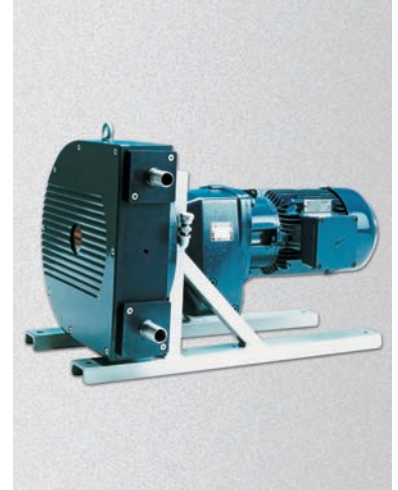
## Ponndorf - Peristaltic Pumps



- Versatile dry-running pumps
- Perfect for shear sensitive, delicate liquids containing solids
- No seals, no glands, no valves, so risk of downtime is minimised
- Can deliver up to 20,000 litres/hr at pressures to 15 bar

### Typical Applications

- Contaminated acids and alkalis, glues, enamels and clay slip
- Surfactants, creams and pastes
- Transferring sauces, yoghurts and purees, brewing yeast
- Metering and dosing milk of lime for water treatment, flocculants, waste slurries and abrasive suspensions



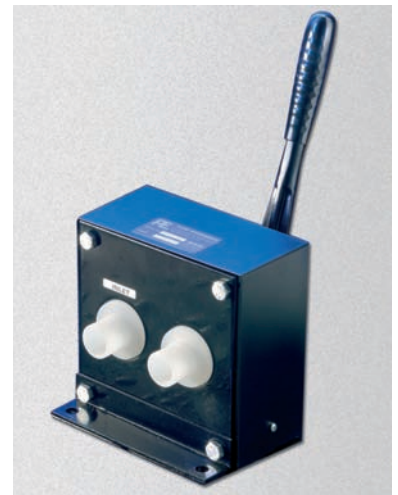
## Pageboy HD14 - Hand Pumps



- Simple, yet highly efficient hand operated pumps
- Ideal for pumping aggressive liquids such as acids and alkalis, including slurries or those containing suspended solids
- Maximum flow rate up to 45 lit/min, max head up to 5 metres and suction lift of 4 metres

### Typical Applications

- Handling acids and alkalis in most general industrial and process applications
- Transferring hydrochloric and sodium hydroxide in water treatment applications



## Pageboy HP250 - Hand Pumps



- Stainless steel/PTFE hand pump
- 15 litres/minute at up to 20m

### Typical Applications

- Solvents, essential oils, demineralised water





## SFD15 Diaphragm Pumps



- Pocket sized, self-priming diaphragm pumps for handling aggressive or corrosive liquids
- Air operated requiring low air consumption, only 3 moving parts
- Unique design features ensure optimum reliability and long life
- Maximum output 3 lit/min, pressures up to 6 bar

### Typical Applications

- Acids, alkalis, solvents and light oils
- Flavourings, essential oils and CIP chemicals

## Control Panels



- Multi-Function pump control panel
- Uses a compact, self-contained microprocessor panel with plug-in connections
- Auto/off/manual facility for each pump and automatic pump changeover with alternate starting sequence
- Bulk and day tank level control facility
- BMS interface

### Typical Applications

- Tank filling and emptying, fuel transfer systems and booster sets
- Pressure or flow control of pumps on ring mains

## Booster Sets



- Hyrovar microprocessor based pumping system controller which automatically adjusts to system demand for optimum energy saving
- Can be wall mounted, mounted directly on any standard IEC motor, or retro-fitted to any existing centrifugal pump
- Sizes available 0.37 to 525 kW
- ECA approved

### Typical Applications

- HVAC, filtration systems and boiler feed
- Deionised water ring mains
- Control of pump performance by temperature sensors
- Water boosting or irrigation to maintain a constant flow or pressure

 **Industrial & Chemical**

 **Pharmaceutical & Cosmetics**

 **Food & Drink**

 **Water & Waste**

## Badger Meter Control Valves



### Technical Data

- RC200 1/4" - 2" low flow control valves
- CV from 0.000018 < 25
- -70°C < +530°C
- < 340 bar

### Typical Applications

- pH control, reactor pressure control, fuel cell testing, pressure testing
- Gas control, fermenter pressure control,
- Flavourings, oils, spray coatings
- Ozone gas flow control pilot valves



### Technical Data

- RC260 1/4" - 2" low flow control valves
- Extended bonnet for wide temperature range
- -270°C < +800°C
- Cold box versions available

### Typical Applications

- Liquid Nitrogen or CO<sub>2</sub> for metal treatment, cryoshrinking or testing engine parts
- Control of gases in freeze drying, MRI cooling
- Cooling tunnels, freeze drying

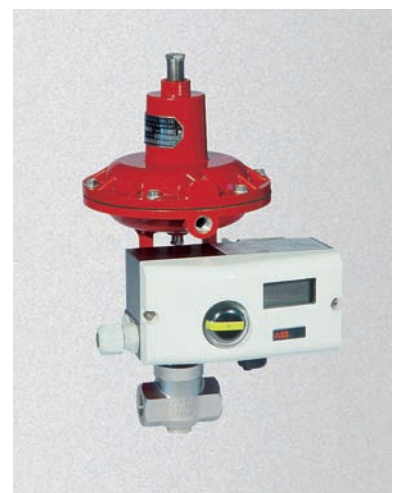


### Technical Data

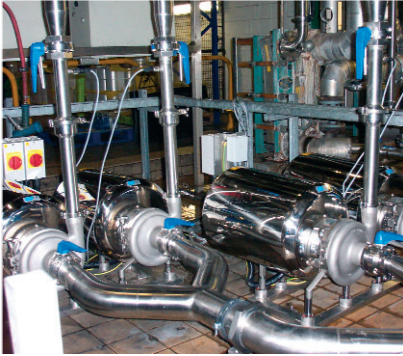
- Special purpose valves
- Wide range of materials
- High pressure 4000 bar valves available
- Pneumatic and I/P positioners

### Typical Applications

- Down well injection in oilwells, RO plants
- Control of chemically aggressive or radioactive liquids, high purity oxygen



## Process Installations - Engineering Services



Process Installations is an associate company of Pump Engineering, providing a wide range of engineering services to industries including the healthcare, brewing, food and pharmaceutical sectors, drawing upon over 30 years of expertise in fluid handling and system design

### Services Include

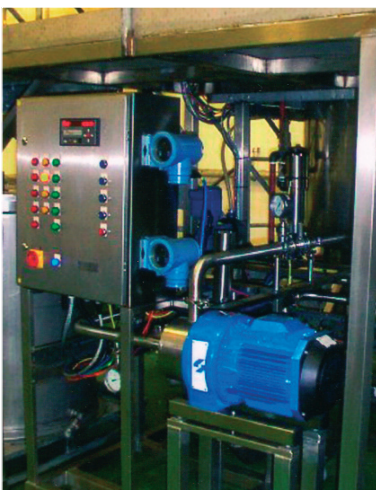
- Installation and repair of process and manufacturing plant
- Design and installation of fluid handling systems
- Breakdown and trouble-shooting service
- Turnkey project management

[www.processinstallations.co.uk](http://www.processinstallations.co.uk)

[sales@processinstallations.co.uk](mailto:sales@processinstallations.co.uk)



## Flowmeter Systems



- Custom-built packaged flowmeter systems
- High accuracy batching or rate of flow
- Volumetric or mass flow
- In-line blending

### Typical Applications

- Oils, additives or water
- Addition or dilution of surfactants and deionised water
- Addition of concentrates, flavourings and syrups
- Water metering for irrigation or waste water

 **Industrial & Chemical**

 **Pharmaceutical & Cosmetics**

 **Food & Drink**

 **Water & Waste**



**PUMP ENGINEERING Ltd**

Tel: 01903 730900

Fax: 01903 730234

[www.pumpeng.co.uk](http://www.pumpeng.co.uk)

● [sales@pumpeng.co.uk](mailto:sales@pumpeng.co.uk)

